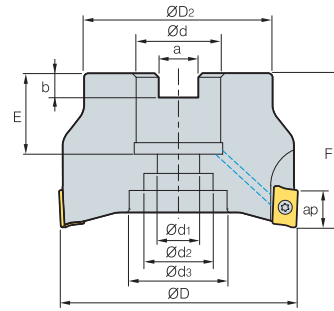
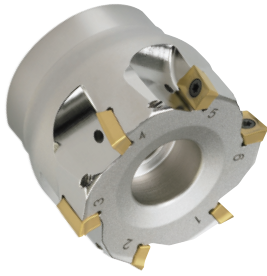


## AMC(M)2000S



AA  
90°  
• AR: 9°~13°  
• RR: -14°~5°

(mm)

Designation	⊙	ØD	ØD2	Ød	Ød1	Ød2	Ød3	a	b	E	F	ap	⊙ kg	
AMCM	2040HS	5	40	34	16	9	14	-	8.4	5.6	18	40	11	0.22
	2050HS	6	50	42	22	11	18	-	10.4	6.3	20	40	11	0.34
	2063HS	8	63	49	22	11	18	-	10.4	6.3	20	40	11	0.57
AMC (AMCM)	2080HS	8	80	57	25.4 (27)	14	25	35	9.5 (12.4)	6 (7)	25 (22)	50	11	1.10
	2100HS	10	100	67	31.75 (32)	18	26	42	12.7 (14.4)	8 (8)	32 (28)	63	11	2.10

( ) Metric size

### Available inserts



Designation	Cermet		Coated										Uncoated		page			
	CN2000	CN30	NCM325	NC5330	NCM535	NCM545	PC2505	PC2510	PC3600	PC3700	PC6510	PC9530	PC9540	PC5300		PC5400	G10	H01
APMT	11T3PDFR-MA																●	E05
	11T308PDFR-MA																	
	11T3PDER-ML												●	●				
	11T308PDER-ML												●	●				
	11T3PDSR-MM			●	●	●		●	●	●	●	●	●	●	●			
	11T3PDSR-MF				●			●	●	●			●	●	●			
	11T308PDSR-MM				●			●	●	●		●	●	●	●			
	11T312PDSR-MM				●			●	●		●		●	●	●			
	11T316R-MM				●			●	●				●	●				
	11T318R-MM				●			●	●				●	●				
	11T324R-MM				●			●	●				●	●				
	11T3PDSR-MN2												●	●				
	11T3PDSR-MN3												●	●				

\* Please purchase 2 types of APMT-MN (nick type) inserts with different chip breakers. \* Please use the cutters with even teeth.

### Available arbors

Designation	Ød	NC arbors	
AMCM	2040HS	16	BT□□-FMC16-□□
	2050HS	22	BT□□-FMC22-□□
	2063HS		
AMC (AMCM)	2080HS	25.4	BT□□-FMA25.4-□□
		27	BT□□-FMC27-□□
	2100HS	31.75	BT□□-FMA31.75-□□
		32	BT□□-FMC32-□□

### Parts

Specification	Screw	Wrench
Ø40~Ø100	FTKA02565S	TW08S

Available inserts E05 Available arbors and bolt E400~E402

